

HM9E



- Nickel plated alloy steel IP68 dual shear beam load cell
- High accuracy
- Suitable for truck and track scales and other heavy weighing devices
- Hermetically sealed



OIML test certificate no. TC7810 Revision 0
C of C no R60/2000-NL1-10.15

Certificate no. 10-057A1

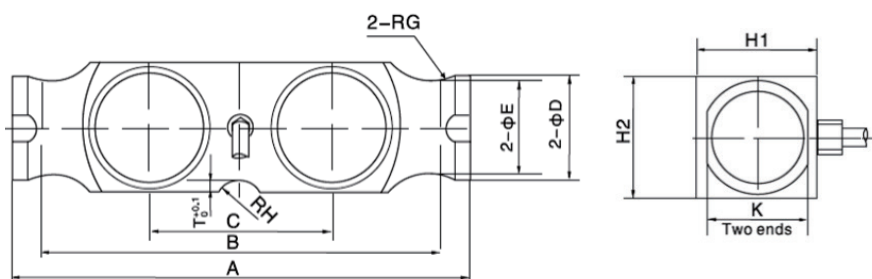
Available models

| Capacity | Accuracy | Full article description |
|----------|----------|--------------------------|
| 50 Klb | C3 | HM9E-C3-50K-12B |
| 65 Klb | C3 | HM9E-C3-65K-12B |
| 100 Klb | C3 | HM9E-C3-100K-12B |
| 125 Klb | C3 | HM9E-C3-125K-12B |
| 200 Klb | C3 | HM9E-C3-200K-12B |

Specification

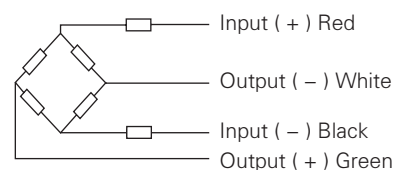
| | | |
|---|---------------------|--|
| Accuracy class | | OIML R60 C3 |
| Output sensitivity (= FS) | mV/V | 3.0 ± 0.003 |
| Maximum capacity (E _{max}) | klb | 50, 65, 100, 125, 200 |
| Maximum number of load cell intervals (nLC) | | 3000 |
| Ratio of minimum LC verification interval $Y = E_{max} / v_{min}$ | | 10000 |
| Combined error | %FS | ± 0.023 |
| Minimum dead load | of E _{max} | 0% |
| Safe overload | of E _{max} | 150 % |
| Ultimate overload | of E _{max} | 300 % |
| Zero balance | %FS | ± 1.0 |
| Excitation, recommended voltage | V | 5 ~ 12(DC) |
| Excitation maximum | V | 18(DC) |
| Input resistance | Ω | 700 ± 7 |
| Output resistance | Ω | 703 ± 4 |
| Insulation resistance | MΩ | ≥ 5000 (50VDC) |
| Compensated temperature | °C | -10 ~ +40 |
| Operating temperature | °C | -35 ~ +65 |
| Storage temperature | °C | -40 ~ +70 |
| Element material | | Nickel plated alloy steel |
| Ingress protection (according to EN 60529) | | IP68 |
| ATEX classification (optional) | | II1G Ex ia IIC T4 II1D Ex iaD 20 T73°C C II3G Ex nL IIC T4 |

Dimensions in mm



| Dimension Capacity | A | B | C | ΦD | ΦE | RG | RH | T | H1 | H2 | K |
|--------------------|------------------|----------------|-----------------|--------------|-----------------|---------------|---------------|--------------|----------------|----------------|---------------|
| 50klb~125klb | 260.5 (10.26) | 215.9 (8.5) | 101.6 (4.0) | 61 (2.40) | 52.32 (2.06) | 25.4 (1.0) | 25.4 (1.0) | 7 (0.28) | 76 (2.99) | 76.2 (3.0) | 55.9 (2.2) |
| 200klb | 304.8 (12.0) | 254 (10.0) | 111.8 (4.40) | 70 (2.76) | 56.69 (2.23) | 38.1 (1.5) | 38.1 (1.5) | 10 (0.39) | 86.1 (3.39) | 86.36 (3.4) | 63.5 (2.5) |

Wiring



- Shielded, 4 conductor cable.
- Cable diameter: Φ8mm.
- Standard cable length: 12m.
- Shield not connected to element.